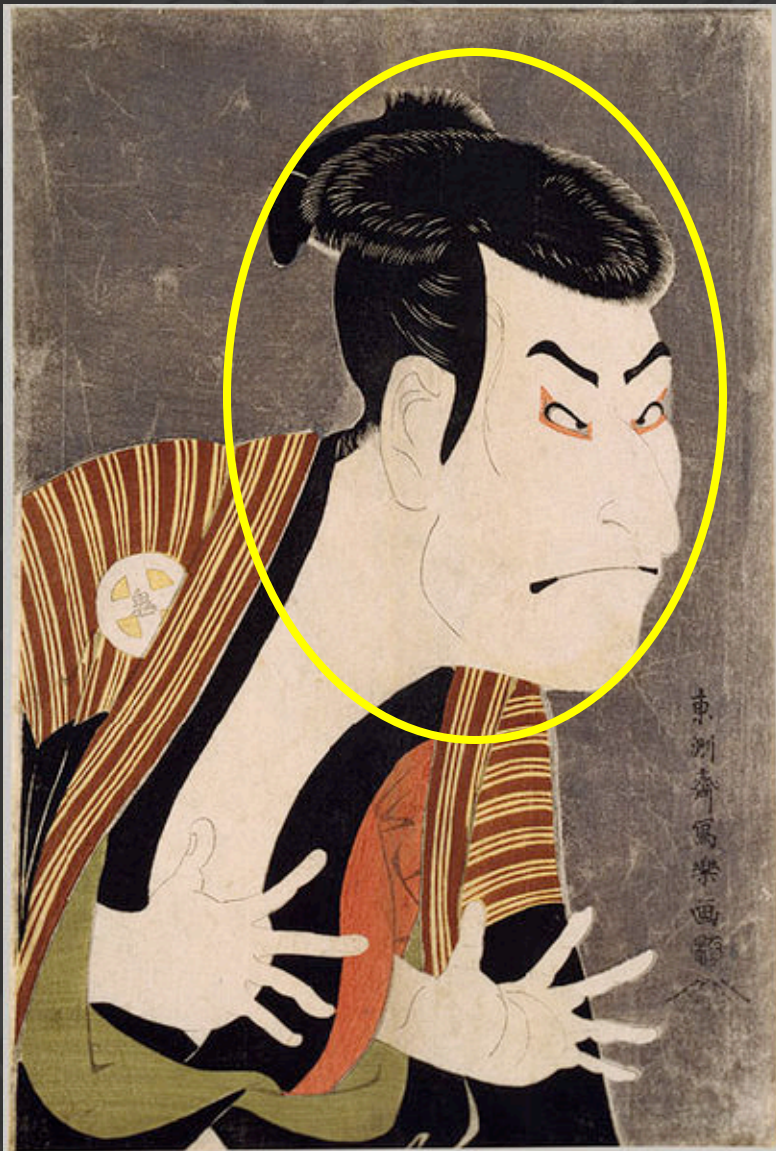


ひらがな

あ～そ

2

Click to continue.



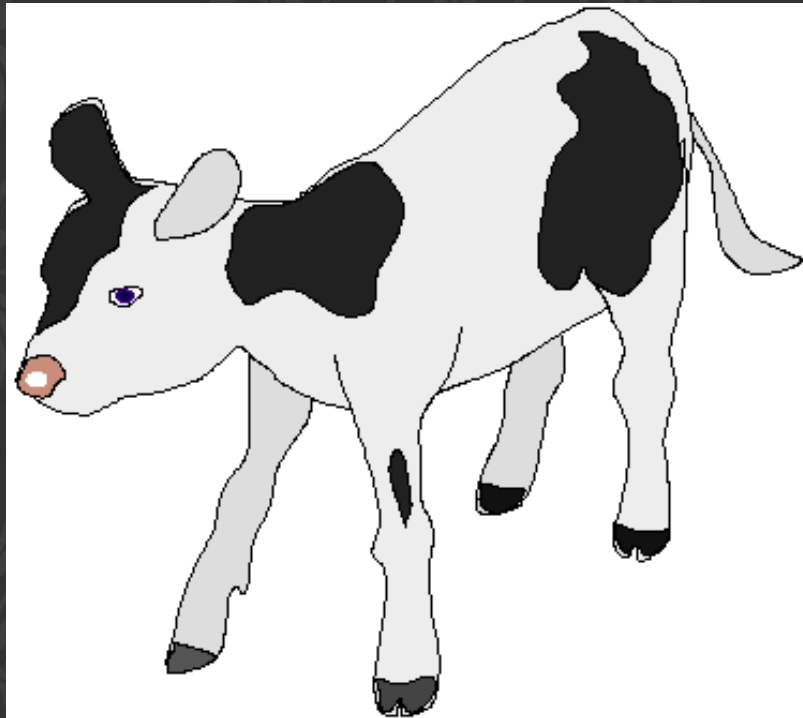
ka o  
かお

face

Source: Wikipedia

Click to continue.

u shi  
う し



COW

Click to continue.

ki

ku

菊

く



chrysanthemum

Click to continue.



sa ke  
さけ



Source: Wikipedia

sake (rice wine)

Click to continue.

se

ki

せき



cough

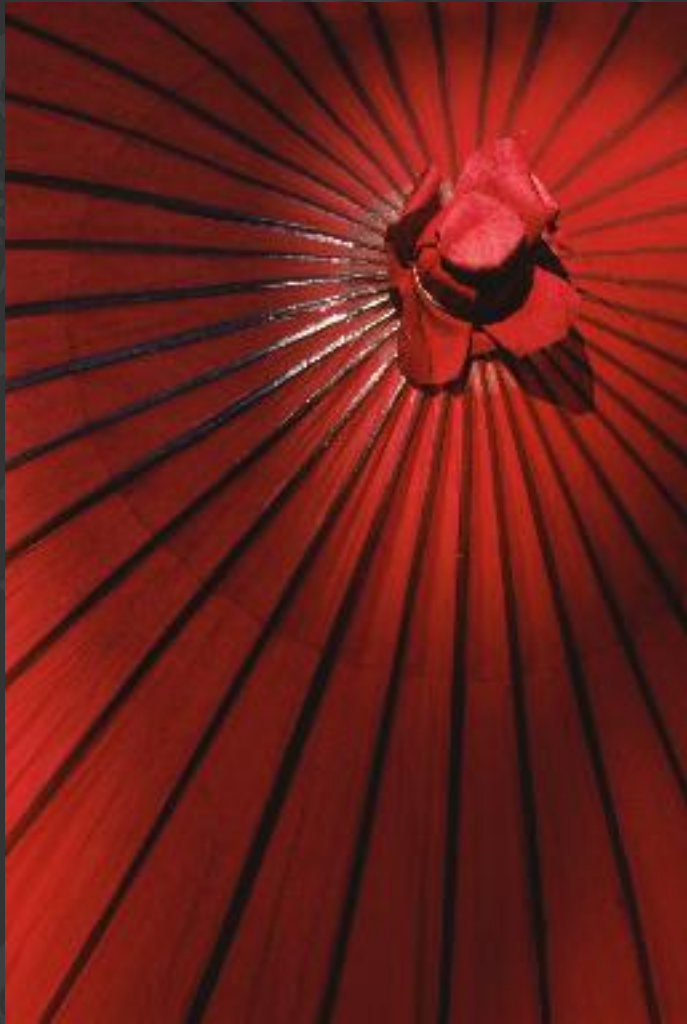
Click to continue.

o ka  
shi  
おかし



sweets

Click to continue.

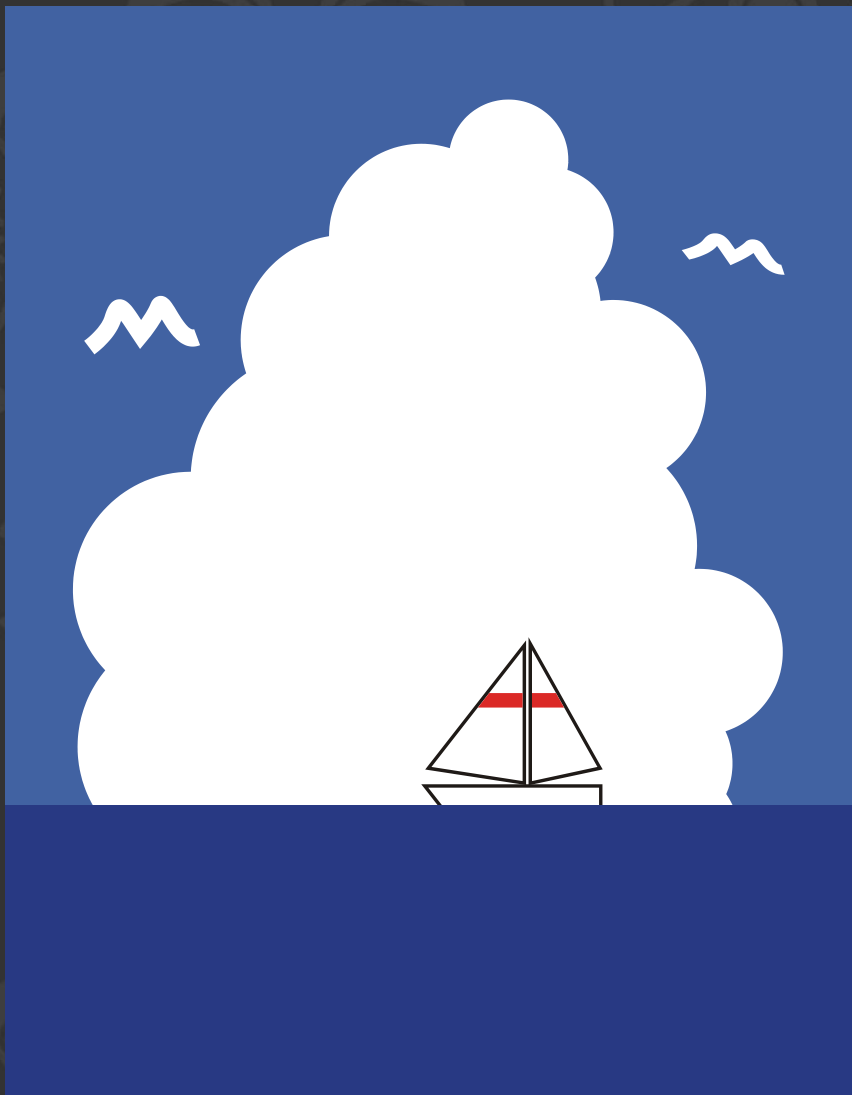


a ka i

あかい

red





a o i  
あおい

blue

Click to continue.

おわり