

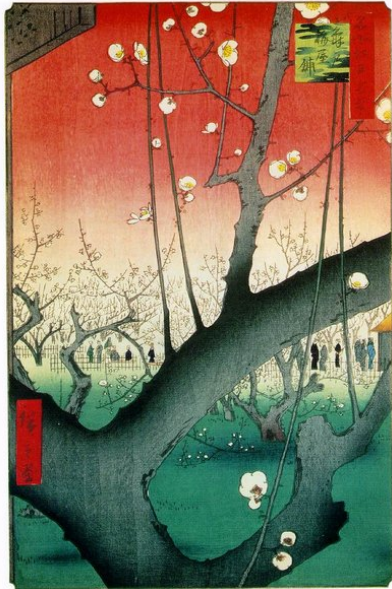
ひらがな

あ～そ

1

[Click to continue.](#)

絵



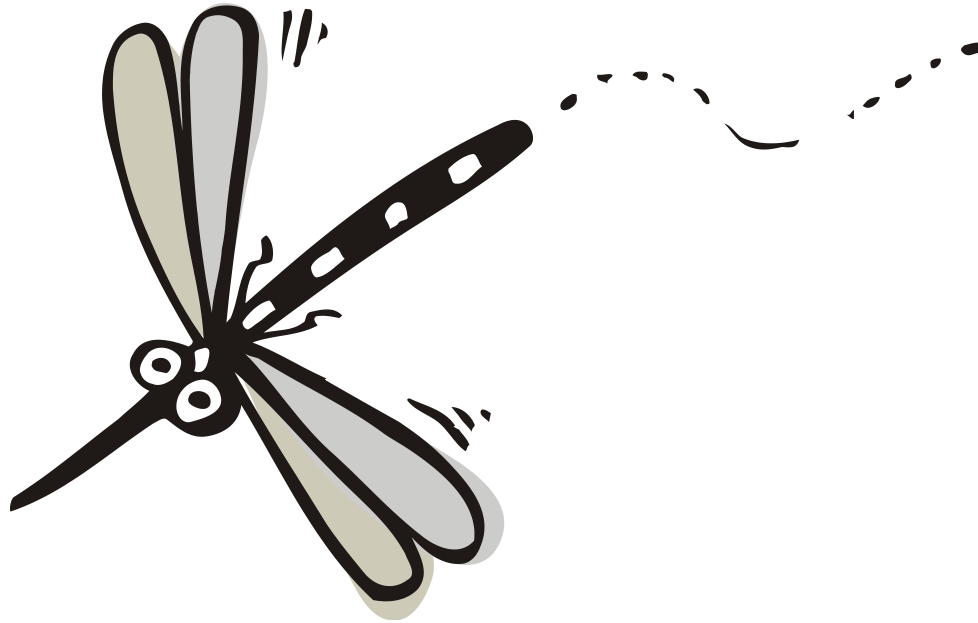
Source: Wikipedia

paintings, pictures

[Click to continue.](#)

ka

か



mosquito

[Click to continue.](#)

ki

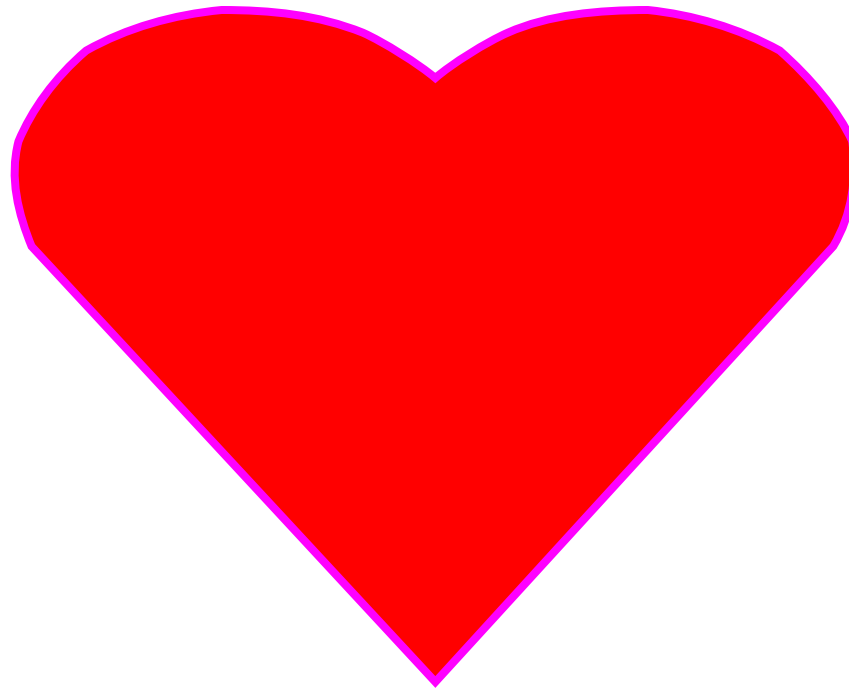
कि



tree

[Click to continue.](#)

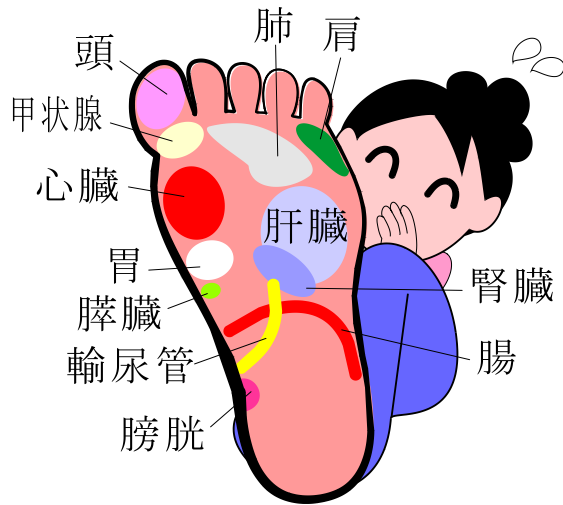
a i
あい



love

[Click to continue.](#)

a shi
あし



foot, leg

[Click to continue.](#)

e ki
え き



station

[Click to continue.](#)

i su
いす



chair

[Click to continue.](#)

a ki
あ き



autumn

[Click to continue.](#)

おわり