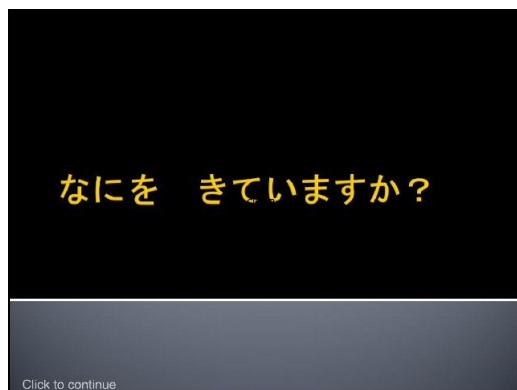


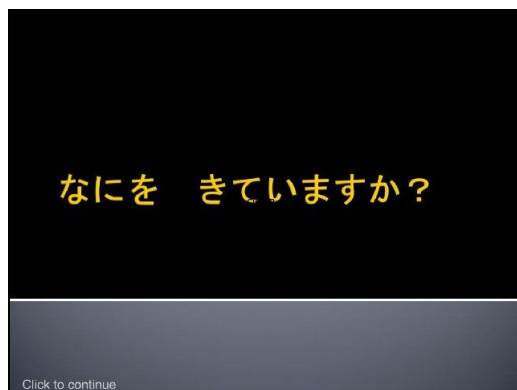
Slide 1 - Slide 1



Slide 2 - Slide 1



Slide 3 - Slide 2



Unit 1: Section 2, Part B: What are they wearing in Japan?

Slide 4 - Slide 3

きものを きています。



Click to continue

The image shows two women seated at a table, wearing traditional Japanese kimono. The woman on the left is wearing a colorful, floral-patterned kimono and is focused on a task on the table. The woman on the right is wearing a pink kimono with a white pattern and is also looking towards the table. The background is dark, and there are some items on the table, including a white ceramic pot and a red object. The text 'Click to continue' is visible in the bottom left corner of the image area.

Unit 1: Section 2, Part B: What are they wearing in Japan?

Slide 5 - Slide 4

てぶくろと マフラーを
しています。



Click to continue

Unit 1: Section 2, Part B: What are they wearing in Japan?

Slide 6 - Slide 5

ブーツを はいています。



Click to continue

Unit 1: Section 2, Part B: What are they wearing in Japan?

Slide 7 - Slide 6

ゆかたを きています。



Click to continue

ゆかた summer kimono

Unit 1: Section 2, Part B: What are they wearing in Japan?

Slide 8 - Slide 7

ジャケットを きています。
ネクタイを しています。



Click to continue

The image shows two men in business attire walking on a city street. The man on the left is wearing a dark suit jacket, a white shirt, and a red tie. The man on the right is wearing a dark jacket, a white shirt, and a striped tie. The background shows a city street with buildings and a car.

Unit 1: Section 2, Part B: What are they wearing in Japan?

Slide 9 - Slide 8

Tシャツを きています。
ショートパンツを はいています。



Click to continue

Slide 10 - Slide 9

