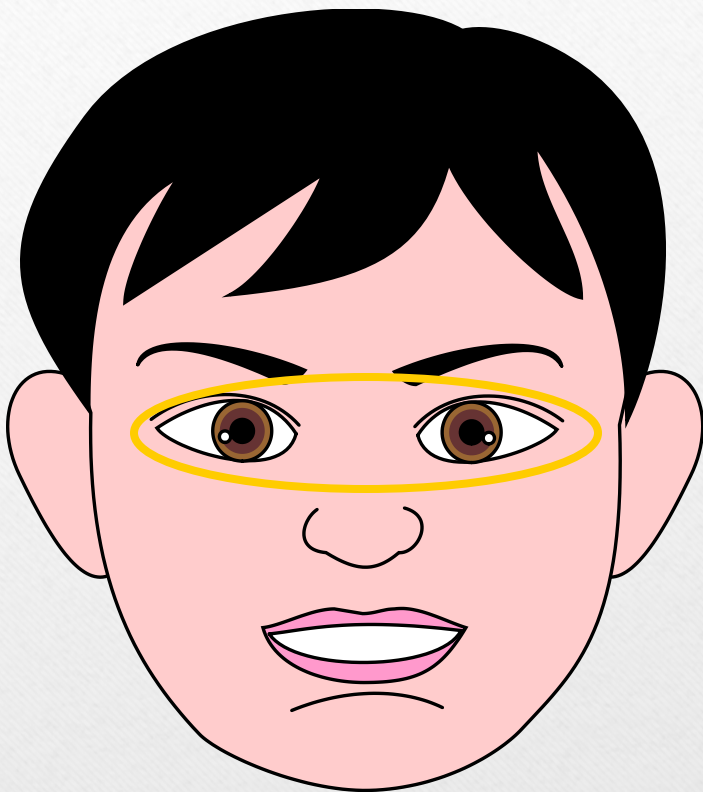


ひらがな

---

ま～ん

[Click to continue.](#)



eye

me

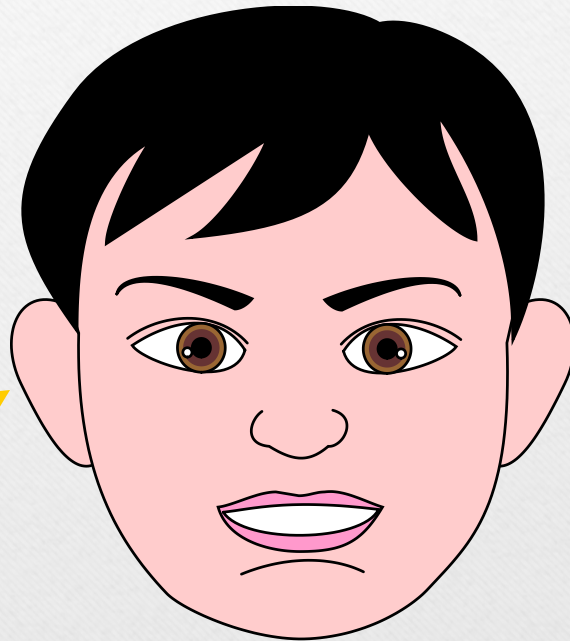


Click to continue.

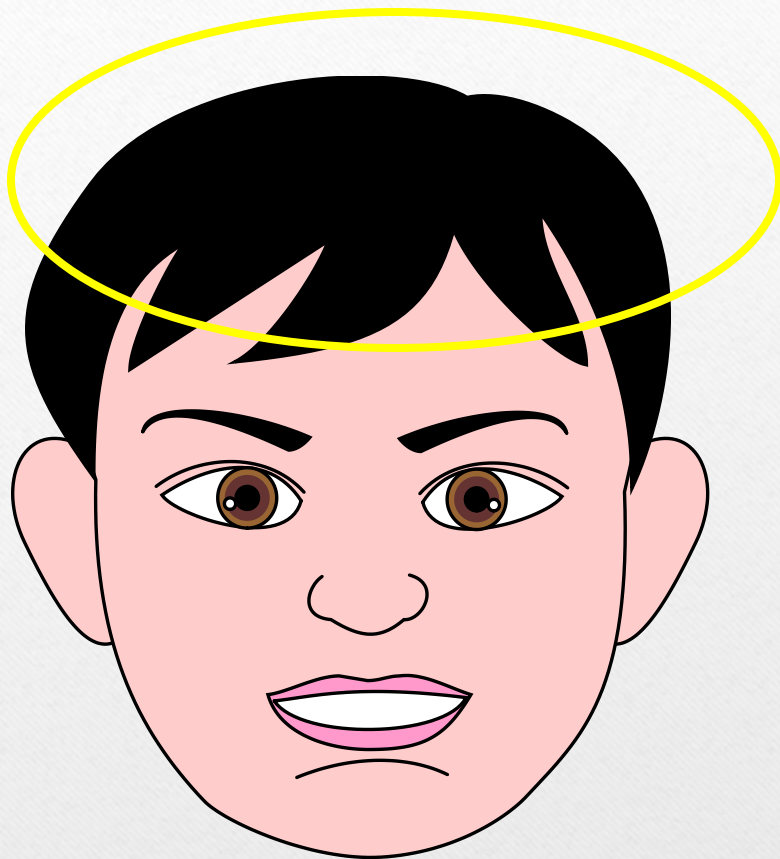
mi mi

みみ

ear



Click to continue.



a ta ma

あたま

head

Click to continue.

fu ku ro

ふくろ

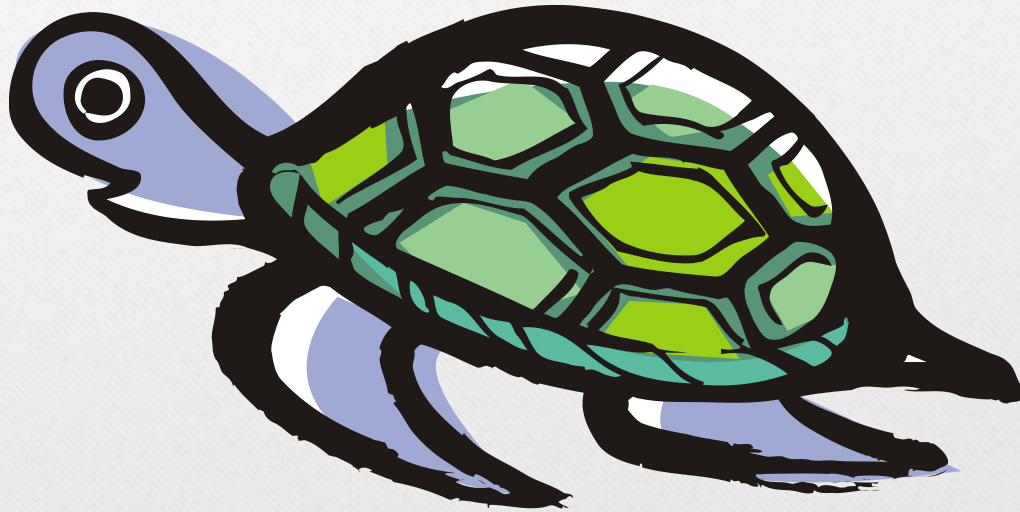


bag

Click to continue.

ka ma

かめ



turtle

Click to continue.

ri su

りす

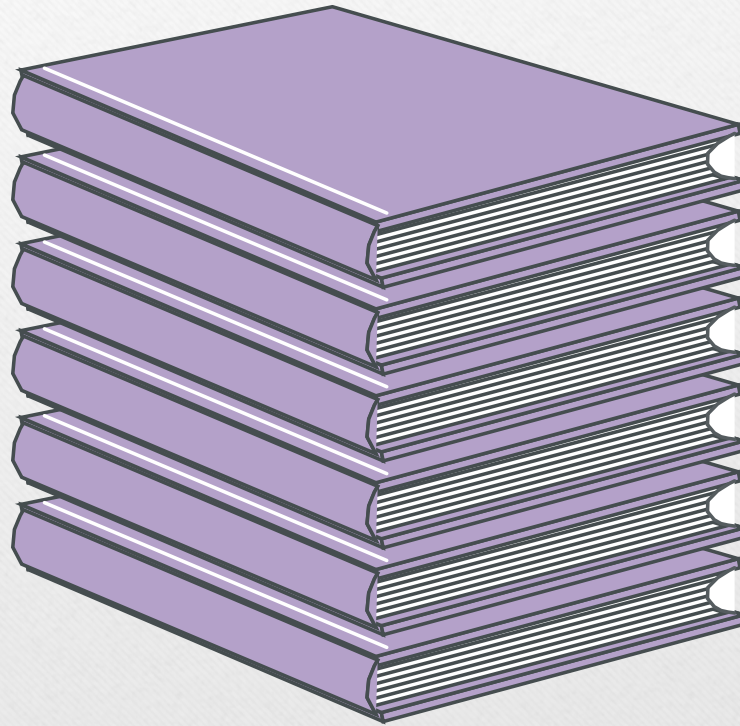


squirrel

Click to continue.

ho n

ほん



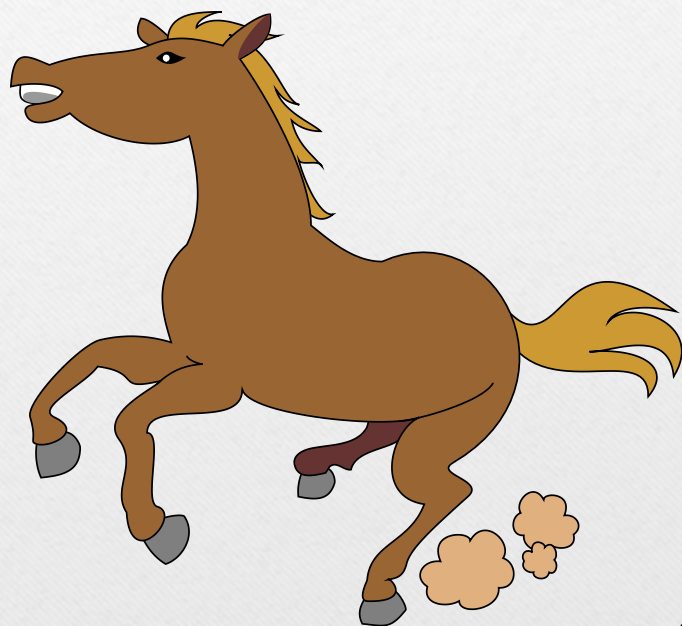
book

Click to continue.



u ma

うま

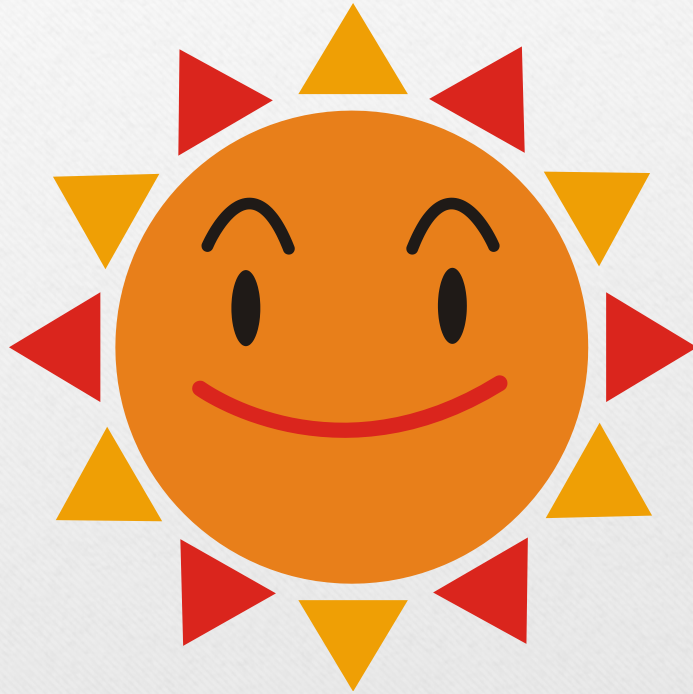


horse

Click to continue.

ha re

はれ

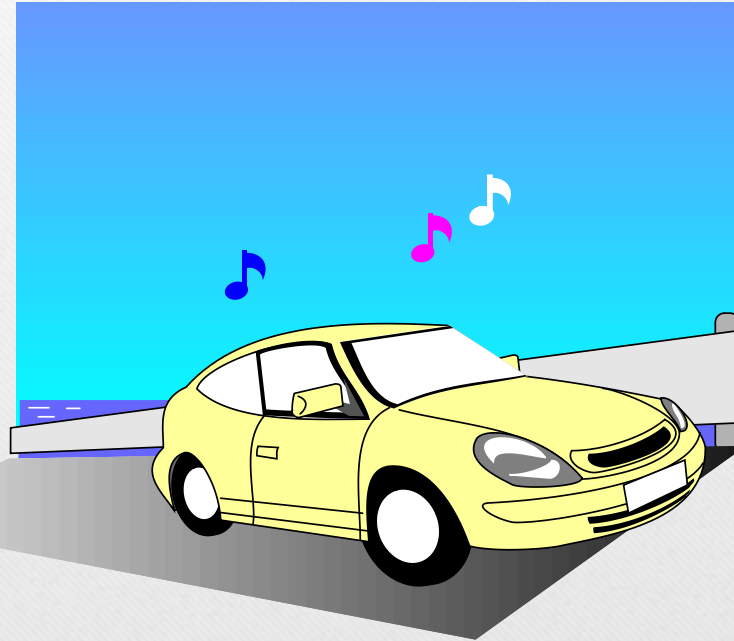


sunny

Click to continue.

ku ru ko

くるま



car

Click to continue.



ki mo no

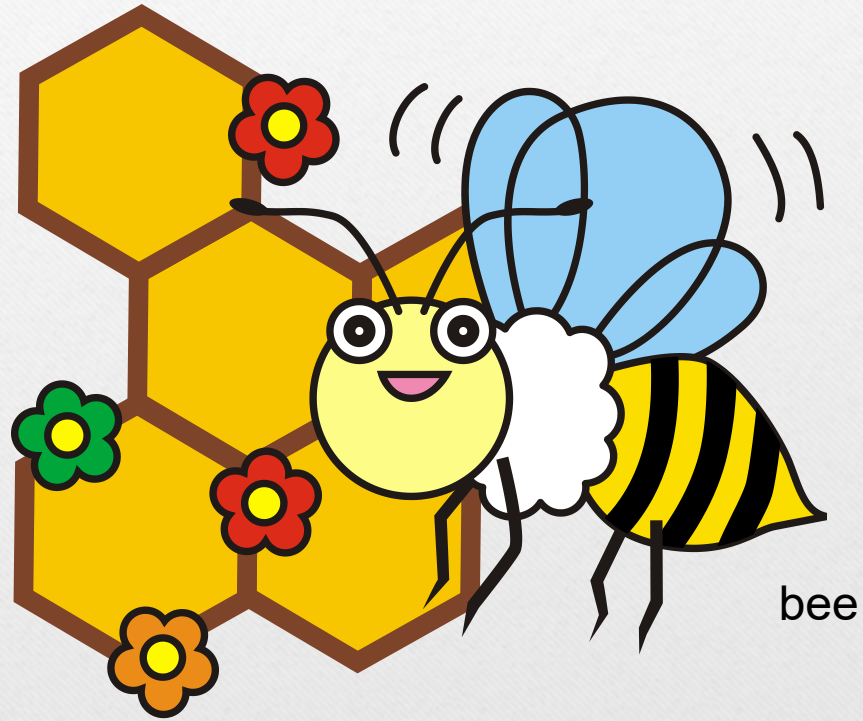
きもの

Kimono (Japanese traditional clothing)

Click to continue.

ha chi

はち



bee

Click to continue.

he ya

へや



room

[Click to continue.](#)

yu ki

ゆき

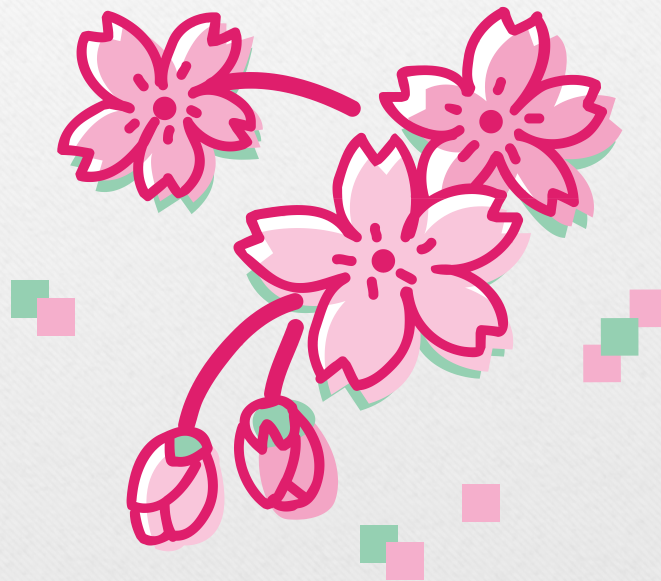


snow

Click to continue.

sa ku ra

さくら



cherry blossom

Click to continue.



ka e ru

かえる



frog

Click to continue.

yo ru

よる



sky

Click to continue.

ya ma

やま



富士山

mountain

Click to continue.

mu shi

むし



insect

Click to continue.

wa ta shi

わたし

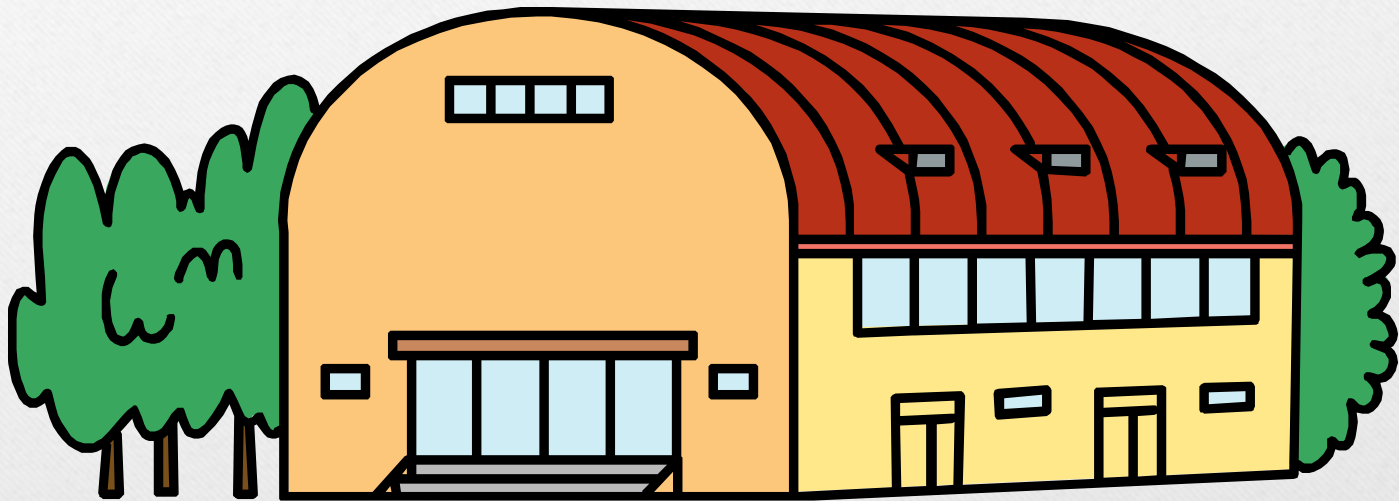


|

Click to continue.

ta i i ku ka n

たいいくかん



gym

Click to continue.

おわり